

Fashion Forecast

by Sandra Keiser and Brenda Schweder

Universal appeal

Fall fashion celebrates the inventive use of materials, offering options from casual to prim to over-the-top. The friction of handcrafted pieces meeting machine-made objects sparks creative tension.



Look for multifaceted palettes and fabrics this season as raw colors (acid green, rattan yellow, Moroccan blue, gloxinia purple, and shades of orange and red) pair with metallics or shades of muted blue, green, gray, taupe, or brown. Unlined jackets and coats feature fabrics that juxtapose rustic comfort with contemporary luxe. Double-faced, boiled, and felted wools offer unconstructed appeal: pinstripes, chalk stripes, and satin stripes suggest a dandy's style. Metallic fibers shot through lavish yarns (cashmere, alpaca, mohair) and innovative textures (crinkled, pleated, jacquard) produce stunning effects. Leathers and suedes featuring metallic, pearlescent, reptilian, and crackled finishes make a modern statement — especially when trimmed



with fur. Prints include paisleys, Pucci-esque geometrics, art deco, and animal themes. Florals transcend their seasons in exotic or vintage-inspired variations — appliquéd, crocheted, or embroidered on clothing. Corsages remain popular, fashioned from felt, mesh, or beads.

BRACE(LET) YOURSELF



Wide, wider, and widest mark the bracelet trend, as broad bangles and cuffs take on newfound prominence.

► **Coral and Turquoise:** Color shines in many of the season's bracelets, including a carved turquoise flower set in a bronze cuff by Stephen Dweck, a wrap bracelet by Susana Storm, and a round-beaded bangle by Miguel Ases. Turquoise- and coral-colored resins are also popular, particularly when paired with gold links in bracelets (Kenneth Jay Lane).

► **Wood and Other Naturals:** Mixed media bracelets are all the wrist rage: a gold wire cuff with ebony wedges (Melissa Joy Manning), a leather-wrapped palm leaf bangle (Simon Alcantara), and a walnut cuff with rows of turquoise and gold accents (Sophia Fiore).

► **Resin and Lucite:** In candy colors, shaped in wedges, or laser cut with floral images, bangles are everywhere. The newest bracelets feature beads or cabochons — sometimes the size of gumballs — studded to the perimeter to add heft.

► **Narrow Bangles:** To meet bigger-is-better expectations, pile on an armful of skinny bangles like an Egyptian queen.

CIRCULAR REASONING

The circle — a symbol of eternity and infinite possibilities — is the season's hottest accessory motif. Rings, disks, and ovals encircle us in multiple ways.

1 Singles: The simplest designs, such as Adina's signature necklace, feature a silver or gold circle hanging from a chain. Circular pendants by Tracy Matthews are sprinkled with semiprecious briolettes.



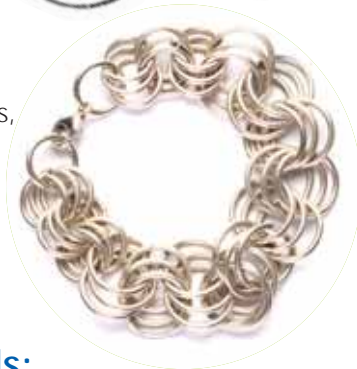
2 Hoops: Narrow or wide, enameled or dotted with gemstones, perfectly round or simply shaped with cutouts, the perennial favorite is everywhere this season.



3 Concentric: Try graduated diameters of wire circles in necklaces or earrings by Nine West, Sibilila, or Lisa Levine.



4 Patterns: Chain maille — patterns of interlocked rings — forms geometric necklaces, bracelets, and rings. Mimi and Marge, and Mallary Marks connect rings in diamond-shaped lattice earrings.



5 Other materials: Justin Giunta sculpts necklaces of blue and clear glass links; Leatherock features gemstone donuts tied into jewelry and belts; and Roxanne Assoulin for Lee Angel creates raffia-wrapped rings mixed with wood and gemstones.



DO IT YOURSELF

► As an environmentally friendly substitute for coral, string jewelry with poppy jasper (p. 66) or bright orange shells (p. 74).



◀ Incorporate circles or jump rings in earrings (p. 70), or make quick hoops with wire and a few gemstone chips (p. 78).

▼ Create a bracelet brimming with round pearls and gemstones (p. 52).



► Dangle an etched donut and a cluster of crystals in a chain necklace (p. 88).



JEWELRY LINKS

To see more of the latest jewelry styles, check out:

adinadesign.com

alexisbittar.com

guess.com

ninewest.com

robertleemorris.com

stephendweck.com

talismanunlimited.com

tracymatthewsdesigns.com

Sandra is chair of the fashion department at Mount Mary College, Milwaukee, Wisconsin. Contact her in care of BeadStyle. Contact Brenda at Miss Cellany Jewelry Kits, brendaschweder.com.