



26

Christmas Tree Earring Designs



*Design Idea
PH2Z*



*Design Idea
PG3G*

INSTRUCTIONS
INCLUDED

MORE IDEAS INSIDE!



FIRE  **MOUNTAIN**
GEMS *and Beads*®
"Friendly Service" Since 1973

TABLE OF CONTENTS

Earrings with Crystal Passions® Beads and Preciosa Gold-Plated Brass and Crystal Rondelles	3-6
Enlarged View	3
Material's List.	4
Instructions	5
Additional Christmas Tree Earring Designs	6
 Earrings with Celestial Crystal® Beads, Preciosa Glass Beads and Czech Glass Beads	7-10
Enlarged View	7
Material's List.	8
Instructions	9
Additional Christmas Tree Earring Designs	10



DESIGN IDEA PH2Z



*Enlarged
to show detail*



DESIGN IDEA PH2Z

INGREDIENTS

[Bead, Crystal Passions®, majestic green, 6mm faceted margarita flower \(3700\)](#)

[Bead, Crystal Passions®, majestic green, 8mm faceted margarita flower \(3700\)](#)

[Bead cap, gold-finished brass, 5x1.5mm flower, fits 6-8mm bead](#)

[Bead, Crystal Passions®, majestic green, 10mm faceted margarita flower \(3700\)](#)

[Bead, Crystal Passions®, majestic green, 12mm faceted margarita flower \(3700\)](#)

[Ear wire, gold-plated brass, 18mm perfect balance angular fishhook with 3.5mm stardust ball and open loop, 22 gauge](#)

[Bead, gold-plated brass, 4mm stardust round](#)

[Bead, Preciosa, gold-plated brass and crystal, crystal clear, 4.5mm rondelle](#)

[Bead, Crystal Passions®, crystal AB2X, 3mm bicone \(5328\)](#)

[Bead cap, gold- / silver- / copper-plated steel, 6x2mm flower, fits 6-8mm bead](#)

[Head pin, gold-plated brass, 2 inches, 21 gauge](#)

[Bead cap, gold-finished brass, 5x1.5mm flower, fits 6-8mm bead](#)

[Pliers, bent nose chain](#)

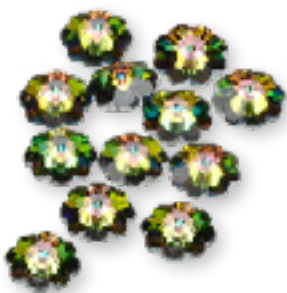
[Pliers, flush-cutter](#)

[Pliers, chain-nose](#)

[Pliers, round-nose](#)



[Design Idea
PH2Z](#)



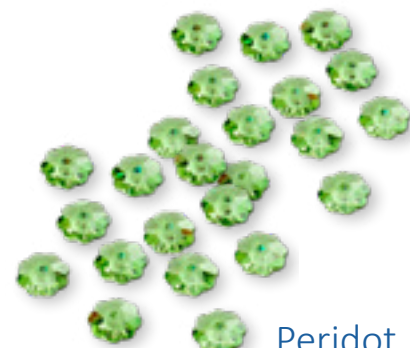
[Crystal Vitrail
Medium 8x3mm](#)



[Majestic Green
10mm](#)



[Emerald
Green, 3 sizes](#)



[Peridot
6x2mm](#)

DESIGN IDEA PH2Z

STEP 1

Thread a 3mm crystal AB2X bicone onto a 2-inch head pin.

STEP 2

Thread on a 6x2 flower bead cap, face down.

STEP 3

Thread on a 5x1.5mm bead cap, face down.

STEP 4

Thread on a 3mm crystal AB2X bicone.

STEP 5

Thread on a 4.5mm Preciosa crystal rondelle.

STEP 6

Thread on a 3mm crystal AB2X bicone.

STEP 7

Thread on, in order, one 12mm, one 10mm, one 8mm and one 6mm Crystal Passions Majestic Green margarita bead.

STEP 8

Thread on one 4mm stardust round bead.

STEP 9

Create a small simple loop with the tail of the headpin, and snip off the remainder of the tail.

STEP 10

Add an ear wire to the simple loop.

STEP 11

Repeat all steps for the second earring.



[Crystal AB
12x4mm](#)

Using the same technique, you can easily create more designs!



Design Idea
K40Y



Design Idea
K62A



Design Idea
K62B



Design Idea
MH73



Design Idea
K40U



Design Idea
MH7S



Design Idea
PH2Z



Design Idea
K40V



Design Idea
MG2G



Design Idea
PC2F



Design Idea
J838



Design Idea
MF38

DESIGN IDEA PG3G



*Enlarged
to show detail*

DESIGN IDEA PG3G

INGREDIENTS

[Bead, Dione®, Celestial Crystal®, 32-facet, red, 14x8mm faceted rondelle](#)

[Bead, Preciosa Czech crystal, light Siam, 6mm faceted round](#)

[Ear wire, gold-plated brass, 19.5mm flat wire oval leverback with open loop](#)

[Component, gold-finished steel, 11mm single-sided flower](#)

[Bead, gold-plated brass, 8x4mm rondelle](#)

[Bead cap, gold-finished brass, 5x1.5mm flower, fits 6-8mm bead](#)

[Bead, gold-plated brass, 5x3mm saucer](#)

[Cone, gold-plated brass, 12x5mm with 3.5mm inside diameter](#)

[Head pin, gold-plated brass, 3 inches, 21 gauge](#)

[Bead, Czech glass druk, opaque satin dark green, 8mm round](#)

[Bead, gold-plated brass, 5mm round](#)

[Pliers, bent chain nose](#)

[Pliers, chain nose](#)

[Pliers, round nose](#)

[Pliers, flush cutters](#)



*[Design Idea](#)
[PG3G](#)*

DESIGN IDEA PG3G

STEP 1

Thread a 12x5mm cone onto a 3-inch headpin, face up.

STEP 2

Thread on a Lt. Siam 6mm round.

STEP 3

Thread on a 5x1.5m flower bead cap, face down.

STEP 4

Thread on a 5x3mmm saucer bead.

STEP 5

Thread on a 5x1.5m flower bead cap, face up.

STEP 6

Thread on a 8mm dark green satin pearl.

STEP 7

Thread on a 5x1.5m flower bead cap, face down.

STEP 8

Thread on an 8x4 gold rondelle.

STEP 9

Thread on an 11x11 flower bead cap face up.

STEP 10

Thread on a red crystal 14x8 large hole rondelle bead and thread on two 5mm gold round beads letting them fall into the center of the rondelle, taking up the center space.

STEP 11

Thread on an 11x11 flower bead cap face down.

STEP 12

Thread on a 5x1.5m flower bead cap, face up.

STEP 13

Thread on a 8mm dark green satin pearl.

STEP 14

Thread on a 5x1.5m flower bead cap, face down.

STEP 15

Make a simple loop in the tail of the head pin.

STEP 16

Attach the simple loop to the loop in the leverback ear wire.



Try out these other festive Christmas designs!



Design Idea
MH85



Design Idea
MH86



Design Idea
MH88



Design Idea
MH72



Design Idea
MH87



Design Idea
MH89



Design Idea
FA3G



Design Idea
K614



Design Idea
PG3M



Design Idea
PH2G



Design Idea
PH38



Design Idea
MH84

You supply the creativity, we supply everything else!



One Fire Mountain Way
Grants Pass, OR
97526-2327 U.S.A.

Connect with Us



Over **100,000** hot jewelry-making products!

- Gemstones
- Crystal Beads
- Stringing Supplies
- Chains
- Metal Findings
- Seed Beads

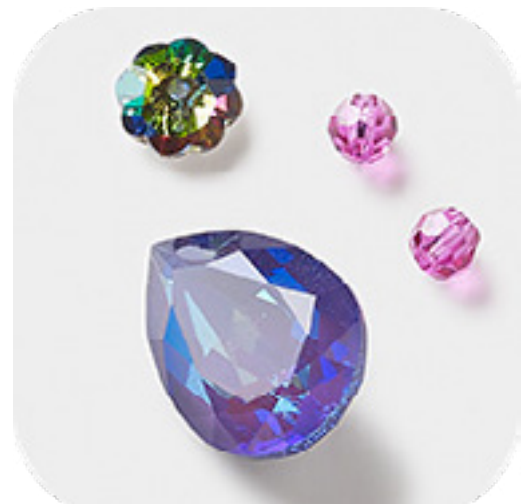
And Much More! firemountaingems.com



Gemstone Beads



Chains



Crystal



Findings



Beading Wire



Seed Beads

To order:

(800) 355-2137

Call from anywhere in the U.S.A. and Canada

Customer Service:(800) 423-2319

Other Countries:(541) 956-7890

Fax Your Order:(800) 292-3473

Other Countries (Fax):(541) 479-4367

Email: info@firemtn.com

Copyright 2023 Fire Mountain Gems and Beads, Inc; All rights reserved

2023


PayPal (Online Only)

Credit & Debit Cards Welcome

